

Quick couplers

Type designation: CW05 - CW55 , MRU30 - MRU40

Verachtert CW quick couplers serve for quick and comfortable exchange of accessories with all construction machine types. They are produced for machines with weights from 1 - 55 tons, with three handling methods: mechanical, mechanical with spindle and hydraulic.

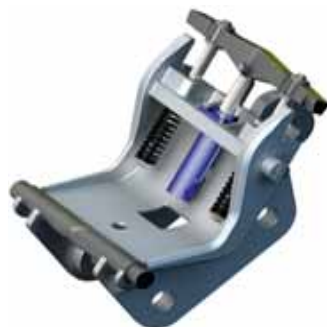
Mechanic handling

The easiest variant with very good acquisition costs; secured by two screws.



Hydraulic handling

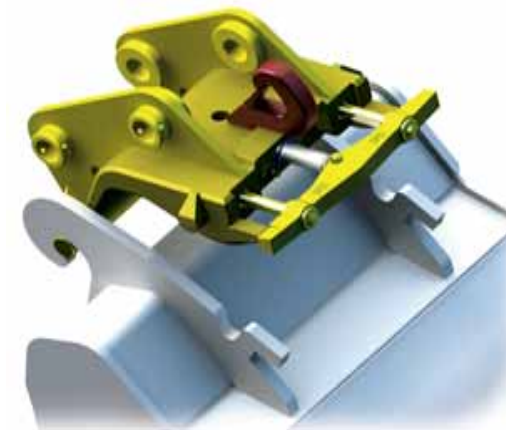
These enable the connection and disconnection of working tools within a few seconds without the necessity to leave the cabin.



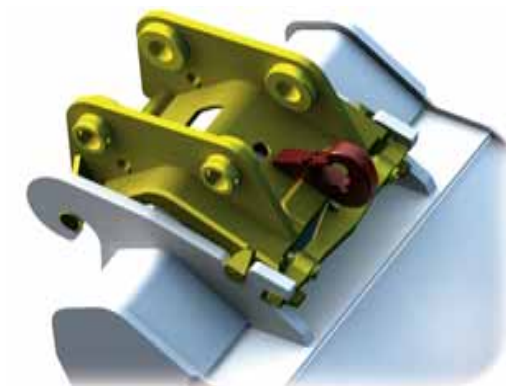
Mechanic handling by spindle

Variant with easy and quick manipulation that does not require a hydraulic connection

Fitting principle of CW quick couplers



Quick coupler fitting into bucket hooks



Bucket secured by blocking

CW quick coupler – mechanic and hydraulic version

Type	CW05	CW10	CW20	CW30	CW40	CW45	CW55
Excavator weight (t)	-3.5	3,5-10,5	7,5-15	15-25	20-30	25-40	35-65

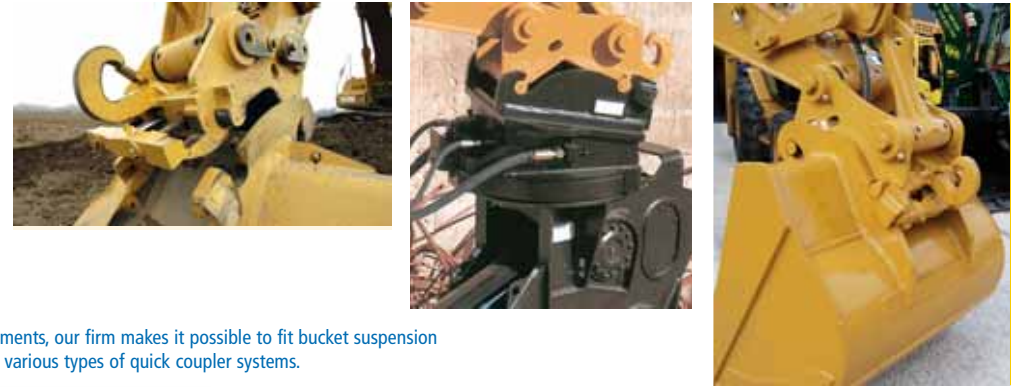
CW quick coupler – narrow version

Type	CW20S	CW30S	CW40S	CW45S	CW55S
Excavator weight (t)	7,5-15	15-25	20-30	25-40	35-65



MRU mechanical quick couplers

This mechanical quick coupler variant enables the use of existing buckets without the necessity to adjust hooks.



Based on your requirements, our firm makes it possible to fit bucket suspension systems for anchoring various types of quick coupler systems.



MRU quick coupler fitting into bucket suspension



buckets with anchoring for SMP2 quick coupler



buckets with anchoring for Volvo S2 quick coupler



buckets with anchoring for Lehnhoff quick coupler

If you are interested in using quick couplers on existing buckets, we also make it possible to exchange suspension with adapters suitable for using on Verachtert CW quick couplers



MRU quick coupler			
Type	MRU30	MRU35	MRU40
Excavator weight (t)	4-6	6-10	9-12